

For Pre-Processing For Plating

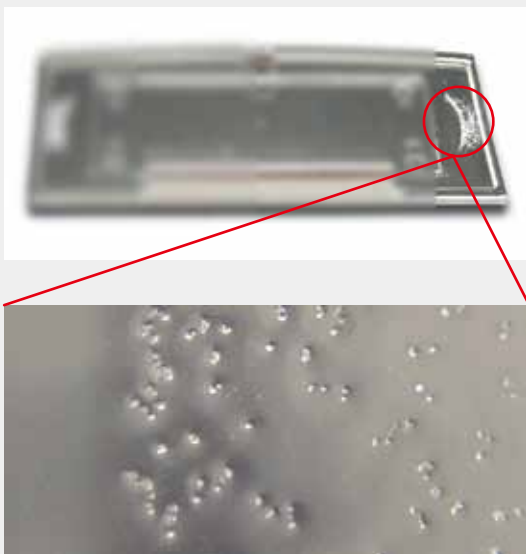
Do you have trouble with gas-generation after molding?
 You can use this low-priced anneal oven!

Box-Type Dryer (Anneal Oven)



Overview PO is box-type dryer and batch-type with 10-30 trays.
 Setting temperature is kept by rational design and PID control
 in relation to circulating hot air.

Defectiveness with the out gas after
 the plating processing



[PO-120]



- Features**
- Container and trays can be removed
 (It is possible to use according to molded part size).
 - Easy to set and change temperatures.
 - Start time can be set by start-up timer use.
 - Breaker used with shunt coil at peak time, the power shuts off for safety.
 - Standard equipment includes overheat protector (Liquid expansion-type).
 This will shut the unit down at the pre-determined temperature.
 - Protects equipment by shutting down power if heater is abnormal
 by breaker points fused detector.
 - Long life sheathed heater is used.

